

• **00.50X.XX SPOTTIC SP PRODUCTSHEET EN** •

**INTRODUCTION**

With the completely (!) wireless SPOTTIC (SP) you choose an advanced wireless and PC connected people counting system. One of the main advantage of the SPOTTIC (SP) is its very simple and quick installation thus being very cost friendly and less disturbing for your visitors. It reduces necessary human interventions to an absolute minimum and offers automatic data collecting. This way you eliminate most –for manual operated systems- characteristic problems like misreading, guessing or irregular data collection, fraud and timeconsumation.

**USAGE**

The Spottic (SP) is specially designed for monitoring events or footfall. Further more this system allows you to:

- Determining average conversion ratio (visitors versus buyers);
- Determining partial conversion ratio (staff planning);
- Differentiation between visitors and staff;
- Decrease of fraud by antimask function;
- Determining of best opening hours;
- Determining of average dwelling time;
- Determining busy moments and peak detection;
- Discovering and optimisation of routing;
- Hotspot determination for instore advertisement.

**DATA COLLECTION**

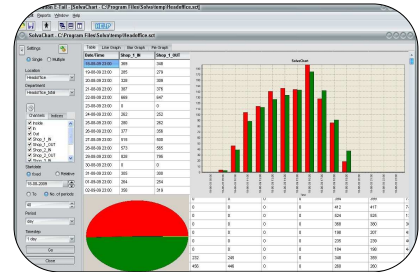
The Spottic (SP) is a PC connected counting system. Data collection is automatic; counting data are accurate and punctual. With Software from Solva u can easily read out data to your PC or GSM. For more information please look at: product sheet 'Software'.

**FEATURES**

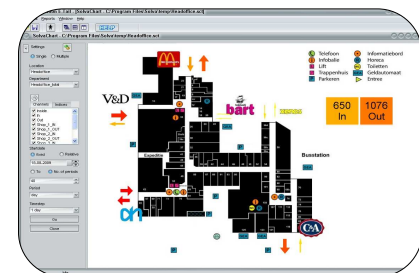
General Memory unit, Mains supplied, time stamped storage, months storage capacity, communication, Ethernet (TCP-IP).

Horizontal sensor: Battery supplied, 433/418 Mhz, Sensor Black, IR-Bi directional, maximum entrancewidht <7,5m (free sight), battery life 1,5 -2,5 year, RF transmitting distance <150m/ 600 feet, <5km with high gain receiving antenna RPSMA connector, front- or side firing mounting, combined entrances and/or isles. Dimensions: ABS 14,5 x 4,7 x 2,7 cm

Vertical sensor: Power supply, 433 Mhz, Sensor white, IR-Bi directional, entrancewidht <20m, RF transmitting distance < 150m, <5km with high gain receiving antenna RPSMA connector, combined entrances and/or isles. Dimensions ABS 11x 5 cm.



Automatic Dataretrieval



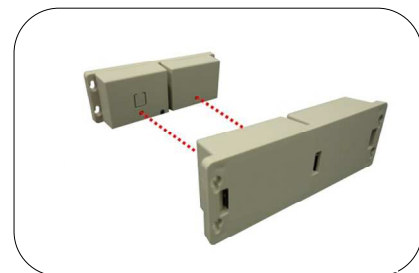
User Friendly Software Included



Spottic (SP) Memory unit



Vertical Sensor



Horizontal sensor