



SOLVA SPOTTIC (NU) SENSOR square

1 SENSOR CHARACTERISTICS

(Operating temperature $T_o = -20$ to $+70$ °C)

Emitter		IR-emitter diode			
Working principle		Opposed (transmitter/receiver)			
Parameter	Test Condition	Min.	Typ.	Max.	Unit
Peak wave length			880		Nm
Maximum adjustable detection distance			15		M
Touch frequency			10		kHz
Operating Temperature		-20		+70	°C

2 ELECTRICAL DATA

(Operating temperature $T_o = -20$ to $+70$ °C)

Receiver					
Output		Output transistor PNP			
Supply voltage polarity protection		Yes			
Short circuit protection		Yes			
Overload protection		Yes			
Output reversal current protection		Yes			
Receiver					
Parameter	Test Condition	Min.	Typ.	Max.	Unit
Supply voltage V_{CC}		10		30	V
Supply voltage ripple				10	%
Current consumption	Load resistance $R_L = \infty$			15	mA
Output load current				200	mA
Response time			1.3		Ms



Transmitter						
Supply voltage polarity protection		Yes				
Transmitter						
Parameter	Test Condition	Min.	Typ.	Max.	Unit	
Supply voltage V_{CC}		10		30	V	
Supply voltage ripple				10	%	
Current consumption				25	mA	

3 MECHANICAL DATA

Degree of protection	IP 65
Housing	PA with glassparticles, tamperproof, waterresistant, black coloured
Dimensions (Receiver Rx)	Please see drawing
Dimensions (Transmitter Tx)	Please see drawing
Cable	Output at back or at side, 4 wire, 2 meter (max 50)
Delivery	Sensorset (Transmitter and Receiver), torquescrews to attach
Operating Temperature	-20... +70 °C
Approval	CE

SOLVA reserves the right to make changes without notice!



4 SPECIFICATIONS STANDARD HOUSING



Sensor mounted front- and sidefiring

Adjustment beamintensity
to vary maximum distance





Cableoutput at back



Cableoutput at back



top



bottom



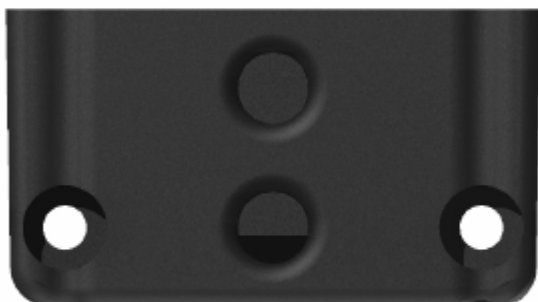
left side



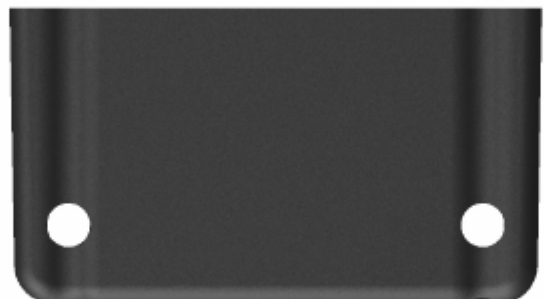
right side



backside

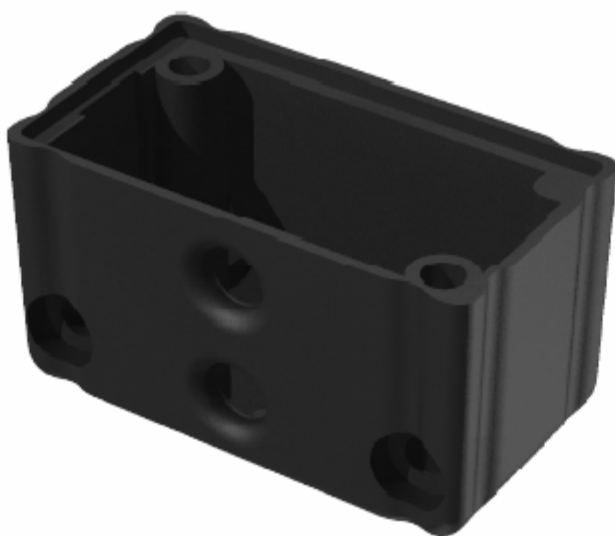


Front

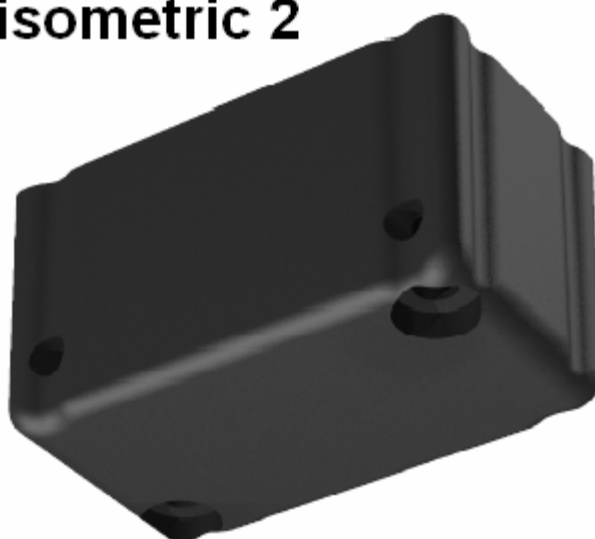




isometric 1



isometric 2





DIMENSIONS (mm)

